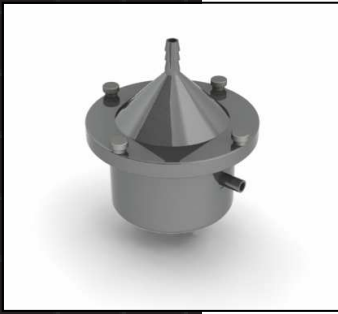


Custom Ricordi® Chambers



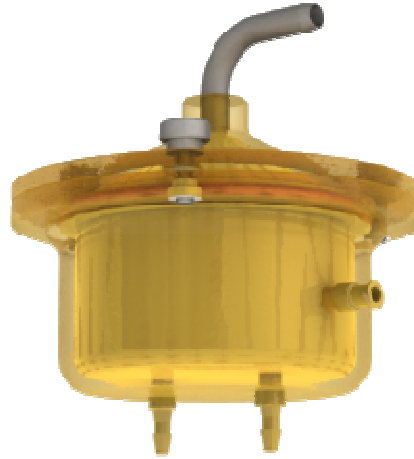
600 mL
Stainless Steel
Ricordi Chamber



50 mL
Stainless Steel
Ricordi Chamber



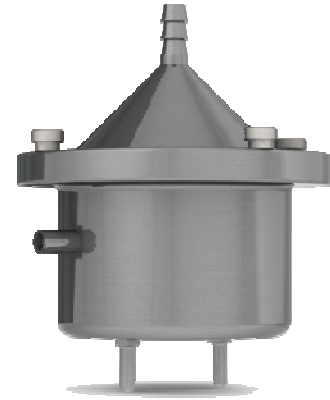
250 mL Ultem
Ricordi Chamber



For islet isolations, different size chambers can be used according to the size of the organ being processed. These come in a variety of sizes: 50, 125, 250, 400, 500, 700 and 1000 ml. The larger chambers are used for adult human or pig organs, and the smaller for infant, mice, dogs, and primate organs.

The material used to construct the chamber can vary also from easily autoclavable materials such as stainless steel or translucent / light amber plastic (Ultem - Polyetherimide). Ultem allows direct observation of the digestion process. All materials used to manufacture the chamber, are biocompatible, sterilizable, nonporous, nonleaching, and nontoxic.

The new molded Ricordi® Chambers are now offered in two different sizes: 500ml and 600ml. Both models are available as disposable or autoclavable versions.



The disposable chamber material is Durastar. This material has sparkling clarity, excellent toughness, and chemical resistance. This chamber is sold individually packed and sterilized.

The autoclavable chamber material is Ultem - Polyetherimide. Ultem is a tough, rigid, high strength thermoplastic that can withstand prolonged exposure to high temperatures and repeated sterilization. The chamber has a translucent / light amber color.

Each Ricordi® chamber comes complete with a screen (specify type), two o-rings, preparation stand, and heating coil.

To monitor the temperature inside the chamber, two different options are offered:

1. Female Luer fitting for [Biorep Thermoprobe](#) (most popular).
2. Thermowell connector for BNC thermocouple.