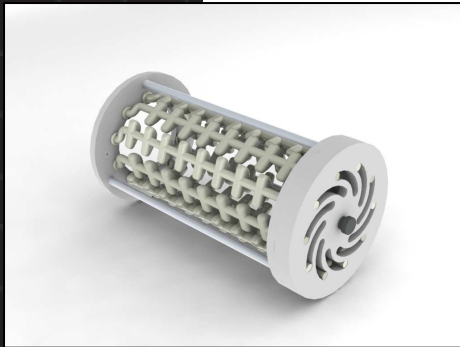


# Organ Transportation Container

## Model No. OTR-01



Rotating cage



The new organ transportation device takes a new approach towards organ preservation. This new device will rotate slowly (1 – 2 revolutions per minute) to constantly rotate the pancreas in and out of the UW and PFC solutions. The device will be battery operated and will run for at least 24 hours on a fully charged battery.

The device will have disposable and non-disposable elements. The pancreas will be placed inside a cage made from polypropylene. The diameter of the cage can be manually adjusted to fit a pancreas by turning one of the ends. The plastic “finger-like” mechanism adjusts the inner diameter of the cage to fit different size organs. Turning one screw can then set the desired cage size.

The cage is then placed inside a clear acrylic tube. Two end caps with o-rings will then seal the container. The container has two ports for pumping the UW and PFC solutions. These ports will also serve as oxygenating ports. The container can also be loaded with the PFC/UW solution by pouring them inside in an upright position.

The complete cage/tube assembly will be the disposable components. This assembly is then mounted on the frame where it will rotate slowly (2-5 rev/min). The rotation speed can be adjusted by changing the pulley ratio. The organ transportation container will be placed inside an insulated shipping container where cold temperatures can be maintained and monitored for at least 24 hours.